

## CAPTURE OF HARPER'S FERRY.

SEPTEMBER 15, 1862

No. 1.

ON SEPTEMBER 10, 1862, GENERAL R. F. LEE, COMMANDING THE ARMY OF NORTHERN VIRGINIA, THEN AT FREDERICK, MD, SET THREE COLUNNS IN MOTION TO CAPTURE HARPER'S FERRY. MAJ GEN. L. MC LANE, WITH HIS OWN DIVISION AND THAT OF MAJ GEN. R. H. ANDERSON, MARCHED THROUGH MIDDLETOWN AND BROWNVILLE PASS INTO PLEASANT VALLEY. ON THE 12TH THE BRIGADES OF KERSHAW AND BARKSDALE ASCENDED MARYLAND HEIGHTS BY SOLOMON'S GAP, MOVED ALONG THE CHEST AND, AT NIGHTFALL, WERE CHECKED BY THE UNION FORCES UNDER COMMAND OF COL. THE HD. ABOUT TWO MILES NORTH OF THIS EIGHT CONFEDERATE BRIGADES HELD WENYNTON SANDY HOOK AND APPROACHES FROM THE EAST. ON THE 13TH KERSHAW AND BARKSDALE DROVE THE UNION TROOPS FROM THE HEIGHTS, FORD, A BARDON, AND SEVEN GUNS, RETREATED ACROSS THE PONTOON BRIDGE, A FEW YARDS ABOVE THE RAILROAD BRIDGE, TO HARPER'S FERRY. THE UNION LOSS WAS 38 KILLED, 134 WOUNDED. CONFEDERATE LOSS, 35 KILLED, 178 WOUNDED. BRIG. GEN. JOHN G. WALKER'S DIVISION, CROSSING THE POTOMAC AT POINT OF ROCKS, 10 MILES BELOW THIS, DURING THE NIGHT OF SEPTEMBER 10 AND, ON THE 13TH OCCUPIED LOUDOUN HEIGHTS AND THE ROADS SOUTH OF THE RIVER, LEADING EAST AND SOUTH.

## CAPTURE OF HARPERS FERRY.

SEPTEMBER 15, 1862.

No. 2.

MAJ. GEN. THOMAS J. JACKSON, WITH HIS OWN DIVISION AND THOSE OF MAJ. GEN. A. P. HILL AND R. S. EWELL, LEFT FREDERICK ON THE MORNING OF SEPTEMBER 10 AND PASSING THROUGH MIDDLETOWN AND BOONSBORO, CROSSED THE POTOMAC AT WILLIAMSPORT, 21 MILES NORTH OF THIS, ON THE AFTERNOON OF THE 11TH. HILLS DIVISION TOOK THE DIRECT ROAD TO MARTINSBURG AND BIVOUACKED NEAR IT. JACKSONS AND EWELLS DIVISIONS MARCHED TO NORTH MOUNTAIN DEPOT ON THE BALTIMORE AND OHIO RAILROAD, SEVEN MILES NORTHWEST OF MARTINSBURG, AND BIVOUACKED. DURING THE NIGHT BRIG. GEN. JULIUS WHITE, COMMANDING THE UNION TROOPS AT MARTINSBURG, ABOUT 2 500 IN NUMBER, ABANDONED THE PLACE AND RETREATED TO HARPERS FERRY. JACKSON OCCUPIED MARTINSBURG ON THE MORNING OF THE 12TH, PASSED THROUGH IT AND ABOUT NOON OF THE 13TH, A. P. HILLS DIVISION IN THE ADVANCE, REACHED MALLTOWN, 3 1/4 MILES WEST OF THIS, AND WENT INTO CAMP. JACKSONS AND EWELLS DIVISION, FOLLOWING HILLS, ENCAMPTED NEAR IT.

## CAPTURE OF HARPERS FERRY.

SEPTEMBER 15, 1862.

No. 3.

COL. DIXON S. MILES, SECOND U.S. INFANTRY, COMMANDED THE UNION FORCES AT HARPERS FERRY. AFTER GENERAL WHITE JOINED FROM MARTINSBURG, SEPTEMBER 12, AND COLONEL FORD FROM MARYLAND HEIGHTS ON THE 13TH, MILES HAD ABOUT 14,200 MEN. ON THE MORNING OF THE 14TH THE GREATER PART OF THIS FORCE WAS IN POSITION ON BOLIVAR HEIGHTS, 1-1/8 MILES WEST, ITS RIGHT RESTING ON THE POTOMAC, ITS LEFT NEAR THE SHENANDOAH; ARTILLERY DISTRIBUTED ON THE LINE. ARTILLERY AND A SMALL FORCE OF INFANTRY OCCUPIED CAMP HILL, NEARLY MIDWAY BETWEEN THIS AND BOLIVAR HEIGHTS. THE CAVALRY WAS UNDER PARTIAL COVER OF THE IRREGULARITIES OF THE GROUND.

ON THE MORNING OF THE 14TH WALKER PLACED FIVE LONG RANGE GUNS NEAR THE NORTHERN POINT OF LOUDON HEIGHTS, AND AT 1PM OPENED ON THE UNION BATTERIES ON BOLIVAR HEIGHTS AND CAMP HILL, WHICH WAS REPLIED TO. AN HOUR LATER JACKSON'S ARTILLERY OPENED ON BOLIVAR HEIGHTS FROM SCHOOL HOUSE HILL AND STILL AN HOUR LATER, McLAWS OPENED FROM TWO PARROTT GUNS THAT HE HAD SUCCEEDED IN PLACING NEAR THE SOUTHERN EXTREMITY OF MARYLAND HEIGHTS. THE FIRE FROM THESE THREE DIRECTIONS WAS CONTINUED UNTIL DARK, SILENCING AND DISMOUNTING SOME OF THE UNION GUNS.

## CAPTURE OF HARPER'S FERRY.

SEPTEMBER 15, 1862.

NO. 4.

IN THE AFTERNOON OF THE 14TH JACKSON'S DIVISION ADVANCED ITS LEFT SEIZED COMMANDING GROUND NEAR THE POTOMAC AND ESTABLISHED ARTILLERY UPON IT. HILLS DIVISION MOVED FROM HALLTOWN OBLIQUELY TO THE RIGHT UNTIL IT STRUCK THE SHENANDOAH, THEN PUSHED ALONG THE RIVER. THE ADVANCE AFTER SOME SHARP SKIRMISHING LATE IN THE NIGHT CAIRED HIGH GROUND UPON WHICH WERE PLACED FIVE BATTERIES, COMMANDING THE LEFT REAR OF THE UNION LINE. EWELL'S DIVISION ADVANCED THROUGH HALLTOWN TO SCHOOL HOUSE HILL AND DEPLOYED ABOUT ONE MILE IN FRONT OF BOLIVAR HEIGHTS. BIVOUACKING ON EITHER SIDE OF THE CHARLESTOWN ROAD, DURING THE NIGHT THE CONFEDERATES ADVANCED ON THE RIGHT AND LEFT CAIING SOME GROUND, AND 10 GUNS OF EWELL'S DIVISION CROSSED THE SHENANDOAH AT KEYS FORD AND WERE PLACED ON THE PLATEAU AT THE FOOT OF LOUDON HEIGHTS TO ENFILADE THE ENTIRE POSITION OF BOLIVAR HEIGHTS.

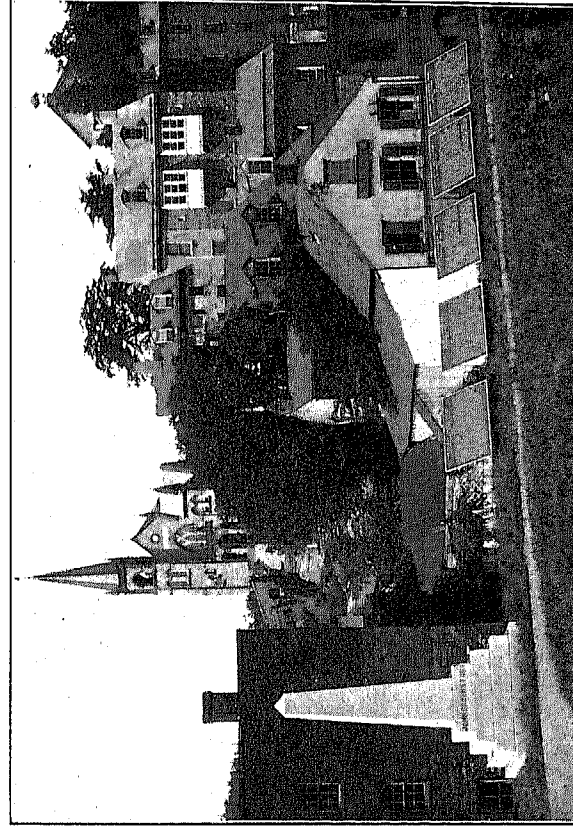
ABOUT 9 P.M. THE ENTIRE UNION CAVALRY FORCE, ABOUT 1500 MEN, CROSSED THE PONTOON BRIDGE, PASSED UP THE CANAL BANK ABOUT A MILE, FOLLOWED THE MOUNTAIN ROAD NEAR THE RIVER, CROSSED THE ANTIETAM NEAR ITS MOUTH, PASSED THROUGH SHARPSBURG ABOUT MIDNIGHT AND ESCAPED INTO PENNSYLVANIA.

## CAPTURE OF HARPERS FERRY.

SEPTEMBER 15, 1862.

No. 5

AT DAYLIGHT, SEPTEMBER 15, THREE BATTERIES OF JACKSON'S DIVISION DELIVERED A SEVERE FIRE AGAINST THE RIGHT OF THE BOLIVAR HEIGHTS DEFENCE. EWELL'S BATTERIES OPENED FROM SCHOOL HOUSE HILL IN FRONT. HILL'S FIVE BATTERIES ON GROUND COMMANDING THE LEFT OF THE LINE AND THE 10 GUNS ACROSS THE SHERANDOA, POURED AN ACCURATE ENFILADE FIRE UPON THE LEFT AND REAR OF MILES' DEFENSES. THE ARTILLERY ON LUDLOW HEIGHTS AND MARYLAND HEIGHTS JOINED IN THE ATTACK. THIS CONCENTRATED FIRE OF 56 GUNS WAS RESPONDED TO BY THE UNION GUNS, BUT IN AN HOUR, BEGINNING TO RUN SHORT OF AMMUNITION, MILES RAISED THE WHITE FLAG IN TOKEN OF SURRENDER. SOON AFTER HE WAS MORTALLY WOUNDED AND THE COMMAND DEVOLVED ON GENERAL WHITE WHO COMPLETED THE TERMS OF CAPITULATION BY THE SURRENDER OF ABOUT 12,500 OFFICERS AND MEN AND ALL PUBLIC PROPERTY. HILLS DIVISION WAS LEFT TO PAROLE THE PRISONERS WHILE JACKSON WITH FIVE DIVISIONS MARCHED TO THE FIELD OF ANTIETAM. EXCLUSIVE OF THE LOSS ON MARYLAND HEIGHTS, THE UNION LOSS WAS 9 KILLED, 39 WOUNDED, CONFEDERATE LOSS 6 KILLED, 69 WOUNDED.



The above picture explains how the government has the John Brown fort the monument and the tablets arranged of Harper's Ferry.