

**LEN ROBERTS,**

—DEALER IN—

**Wagons, Buggies, Tinware, Stoves,  
Hardware, Pumps and Windmills,**

AND FIRST CLASS IMPLEMENTS OF ALL KINDS.

DENTON . . . . . KANSAS.

W. H. PENNEBAKER,

DENTON . . . . . KANSAS.

DEALER IN

**STAPLE AND FANCY DRY GOODS,**

Boots, Shoes,  
Hats, Caps, **Groceries, Flour and Feed.**

ALSO LADIES AND GENTS FURNISHING  
GOODS, NOTIONS and TRIMMINGS.

QUEENSWARE and FURNITURE.

Orders taken for Gents Tailor made Clothing.

**J. E. STEPP, M. D.,**

PHYSICIAN AND SURGEON,

DENTON, KANSAS.

**S. L. DENTON,**

—Proprietor of the—

**City Meat Market,**

DENTON . . . . . KANSAS.

**FARMERS' STATE BANK,**

WATHENA, KANSAS.

CAPITAL . . . . . \$10,000  
SURPLUS . . . . . 1,000

A strong, safe, and conservative Bank.

Always willing to advise and assist our patrons.

Regard all business transactions as strictly confidential, and accord every accommodation consistent with safe banking.

Call your attention to our substantial backing by our directors and stockholders.

**DIRECTORS:**

L. C. Burns, A. O. Delaney, L. A. Libel, Aug. Miller,  
P. A. Pettis, J. H. Sallee, J. L. Browne.

**STOCKHOLDERS:**

L. C. Burns,	Peter Manville,	John W. Lehman,
A. O. Delaney,	W. H. Manville,	Lucas Studer,
L. A. Libel,	W. J. Canter,	J. L. Studer,
Mrs. Aug. Miller,	Jacob Groh,	B. V. Wasser.
Nicholas Bohr,	J. Lew Browne,	Joseph Schoenfeider,
F. C. Foley,	Adam Groh,	James R. McPherson,
Martin Magg,	N. J. Shalz,	Frank Libel,
J. H. Sallee,	Geo. M. Gramer,	Andrew Ramsel,
B. Schmille,	Albert Weigant.	

YOUR BUSINESS RESPECTFULLY SOLICITED

**I. S. PINYERD,**

**CONTRACTOR and BUILDER,  
DENTON, KANSAS.**

CAN BUILD IT FOR YOU, WHETHER IT BE  
A PALACE OR A PLAY HALL,

A Cottage or a Castle,

By careful calculations, and by sawing to the line he  
SAVES YOU MONEY BY SAVING LUMBER

Tell him what you want, and he  
will tell you the cost and the  
day he will have it ready for you.

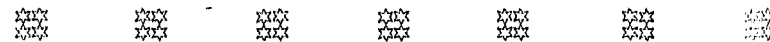
And when he turns the key over to you, there will  
be the satisfaction of having things right—the way  
you wanted them—and that's happiness in itself.

**Yes, neighbor,**

IF YOU ARE GOING TO BUILD,  
**PINYERD is the MAN to plan with.**

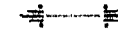
# The Farmers Bank of Leona,

LEONA, KANSAS.



**CAPITAL, \$10,000.00**

—ESTABLISHED 1895.—

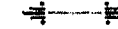


Transacts a general Banking business.

We issue our own drafts payable in all the principal cities of the United States and Europe.

Every accommodation consistent with safe and sound banking will be accorded our patrons.

Our past record of ten years is our guarantee of fair treatment in the future.



## OFFICERS AND DIRECTORS:

J. D. HAZEN,  
President.

GEO. KIMMEL,  
Vice President.

A. O. DELANEY, Cashier.

OLE LARSEN,

P. M. LEONHARD.

**BENDENA STATE BANK,**

BENDENA, KANSAS.

INCORPORATED 1904.



CAPITAL, \$10,000.

This Bank is practically a home institution, and our policy is to extend to our patrons the very best accommodations consistent with sound business methods.

WE ARE FULLY PROTECTED BY BURGLARY  
AND ROBBERY INSURANCE.

INTEREST PAID ON TIME DEPOSITS.

**DIRECTORS:**

Walter Zimmerman, J. P. Severin, A. L. Wynkoop,  
A. M. Ricklefs, W. H. Dorn.

**OFFICERS:**

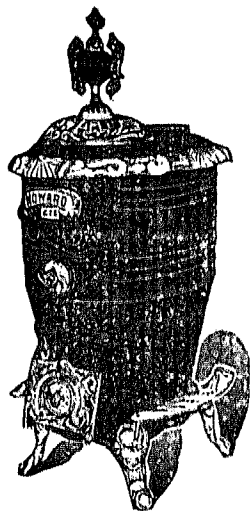
WALTER ZIMMERMAN, President,  
J. P. SEVERIN, Vice President,  
W. M. GILLEN, Cashier.

We furnish Letters of Credit, and buy and sell  
Foreign Exchange.

G. L. Stuart. O. H. Bowman.

## Stuart & Bowman,

GENERAL MERCHANDISE,  
NOTIONS, HARDWARE,  
STOVES and TINWARE.



PROPRIETORS OF  
**WATHENA FRUIT CO.,**  
SHIPPERS OF NATIVE FRUITS,  
WATHENA, KANSAS.

## TILBURY & SON,

Bendena, Kansas.

Began Business in 1902.

**General Blacksmithing  
and Wagon Repairing.**

MANUFACTURERS OF  
❖ STEEL ❖ WELL ❖ AUGERS. ❖

≡—WELL BORING.—≡

**HORSE SHOEING A SPECIALTY.**

## The Penn Mutual Life Insurance Company OF PHILADELPHIA.

Nearly 60 years of  
honorable dealing.

Established, 1847.

“STOP”—

“LOOK—

“LISTEN

While I

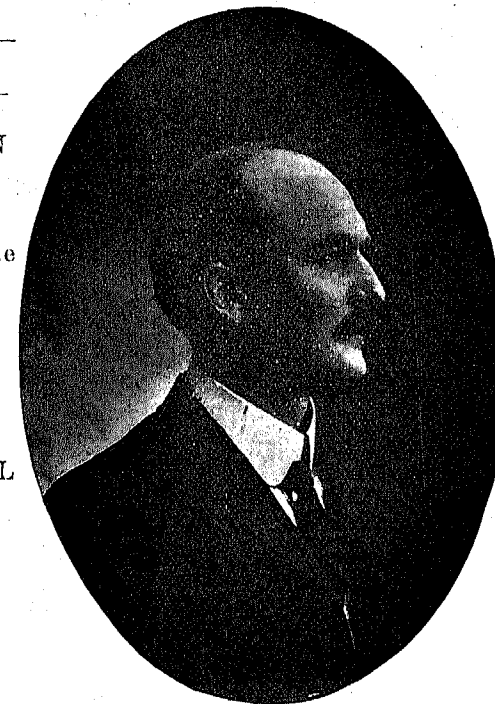
explain the

merits of

the OLD

PENN

MUTUAL



The  
Best  
Dividend  
Paying  
Company  
in  
America  
Today.

!!!

This is not the picture of William Penn, but of H. C. Hansen, the Reliable District Agent for the **PENN MUTUAL LIFE INSURANCE COMPANY.** Ten years in the insurance business. Should you desire any information on ANY policy contracts, submit them to me and a full and correct explanation will be given **FREE.**

Telegraph me at my expense if in a rush.

**H. C. HANSEN, SEVERANCE, KANS.**

**CUMMINGS & ELLIOTT,**

— BUYERS AND SHIPPERS OF —

• **Cattle, Hogs and Horses,** •

DENTON KANSAS.

**CHAS. MURRAY,**

DENTON, KANSAS.

Dry Goods, Groceries, Shoes, Hats, Queensware, Notions and  
GENERAL FURNISHING GOODS.

LEONA ADVERTISING.

**C. N. WILLIS & CO.,**

—DEALERS IN—

**Lumber, Lath, Sash, Doors, Lime,**

HAIR, CEMENT, COAL, ETC.

LEONA, KANSAS.

**J. RITTERBUSH, \* \* \* \* \***

Dealer in

• GENERAL • MERCHANDISE •

LEONA, KANSAS.

OLDEST ESTABLISHED BUSINESS IN LEONA.

**OUR MOTTO:**

Honest Goods, Honest Prices, and Fair Dealing.

**L. RICKENBACH, Manager.**

**LEONHARD BROTHERS,**

**Leona DRUGGISTS Kansas.**

KEEP A FULL AND FRESH SUPPLY OF  
DRUGS, MEDICINES, PAINTS, AND OILS.

—ALSO—

**A PLEASING ARRAY OF  
Toilet Articles and Fancy Goods.**

Every visitor finds within, Everything new and neat as a pin.

**Dr. J. I. Martley,**

**PHYSICIAN AND SURGEON,**

• DISPENSING DRUGGIST, •

Leona, Kansas.

**DO IT NOW**



Write us a card saying you would like to have the EMPIRE CREAM SEPARATOR brought to your house for free trial. It makes the most dollars for you—Costs you nothing to try it—Sold for cash or on easy payments. E. A. BENSON, Agt., Leona, Ks.



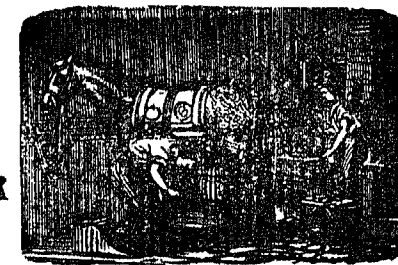
**E. A. KINSLEY,**

**BLACKSMITH**

—AND—

**WAGON WORKER**

LEONA, KANSAS.



**SATISFACTORY WORK AT  
REASONABLE PRICES.**

**O. C. HARDY,**  
**-- DRUGGIST --**

AND DEALER IN  
PURE DRUGS, MEDICINES, PAINTS,  
OILS, VARNISHES, TOILET  
ARTICLES AND  
FANCY GOODS.

FINE IMPORTED AND DOMESTIC CIGARS.

Bendena, Kansas.

W. J. Edwards, I. E. I. Edwards.

**EDWARDS BROTHERS,**

BENDENA, KANSAS.

—Dealers in—

**QUEENSWARE.**

An attractive line of goods at prices that compare favorably with city prices. We have something to suit everybody. Step in and you'll find something for your table. We are pleased to show our goods and quote you temptingly low prices.

BARBER SHOP. Young men wishing to "slick up" for Susan Jane Sweetheart can get a smooth shave or a dandy hair cut here. Jared is always courteous and smiling.

• JAMES AYLWARD, •

—Proprietor of the—

**CITY RESTAURANT.**

Big Loaves of the Best Bakers' Bread.

Agent for the A. B. C. Laundry. Bendena, Kan.

**R. R. GLUTZ, M. D.,**

PHYSICIAN • and • SURGEON,

Bendena Kansas.

Office first door south of Hardy's Drug Store.

Special attention paid to diseases of Children.

**ED. KEENEY,**

**HARDWARE**

**IMPLEMENTS**

**FURNITURE**

SEVERANCE,

KANSAS.

**T. J. FRANCIS,**

SEVERANCE, KANSAS.

—DEALER IN—

**Coal, Lumber, Sash, Doors, Blinds,**

AND ALL KINDS OF

**BUILDING MATERIAL.**

**DR. R. H. MERRICK,**

..... OF SEVERANCE,

INTRODUCED



**Crown and Bridge Work,**

Which is his SPECIALTY in this County.

He also does other HIGH GRADES of

**DENTISTRY,**

Including PORCELAIN INLAYS.

**THE OLD RELIABLE STORE.**

**J. P. SEVERIN,**

—DEALER IN—

**General Merchandise, Grain, Stock  
and Produce,**

• **BENDENA, KANSAS.** •

Here may always be found a full and complete  
**LINE OF DRY GOODS AND GROCERIES.**

Reasonable prices prevail the year round. No spurts and starts—no dodges or baits—just a business way of doing business. My goods are reliable and my prices are right.

**J. C. ALBERS,**

—PROPRIETOR OF THE—

**BENDENA LIVERY BARN.**

Good Rigs and Prompt Service.

**YOU'LL NOT MISS THE CARS**

When you ride with me,

BECAUSE—

**WHEN  
I  
GO**



**I  
GO  
HIKING!**

**PROMPT ATTENTION PAID TO DRAYING**

**THE BANK OF DENTON,**

DENTON, KANSAS.

Originally chartered with \$5,000.00 Capital Stock on August 27, 1894. September 7, the same year, charter amended and Capital increased to \$6,000.00. January 3, 1901, Capital Stock was farther increased to \$8000.00, and again on March 7, 1905 to \$10,000.00.

The Bank opened for business October 2, 1894.

George Denton, its first president served from October, 1894 to April 1902, the time of his death. William Denton was elected to fill the vacancy and has served up to the present time.

S. O. Harpster has been its cashier since its organization.

The Bank of Denton does a general banking business and steadily increased in volume of business and in capacity to serve its patrons. No banking institution in this vicinity has a steadier, evener business than the Bank of Denton.

**Officers and Directors.**

William Denton, President, James Miller, Vice President.  
John J. Alt, Sec., S. O. Harpster, Cashier, J. B. Roberts.

**Official statement issued August 25, 1905:**

RESOURCES.		LIABILITIES.	
Loans and discounts,	\$24,685 21	Cap. stock paid in	\$10,000 00
Loans on real estate	5,958 65	Undivided profits,	88 15
Bank building	2,000 00	Interest	1,417 95
Furniture and fixtures	1,000 00	Exchange	223 04
Expense account	1,053 72	Individual deposits	43,406 61
Bonds and warrants	10,255 23	Time deposits draw-	
Cash and Sight ex-		ing less than 6 pr c.	4,956 00
change legal res.	15,138 94		
<b>Total</b>	<b>\$60,091 75</b>	<b>Total</b>	<b>\$60,091 75</b>

**WE SOLICIT YOUR BUSINESS.**

Money to loan on real estate on best terms and lowest rates.

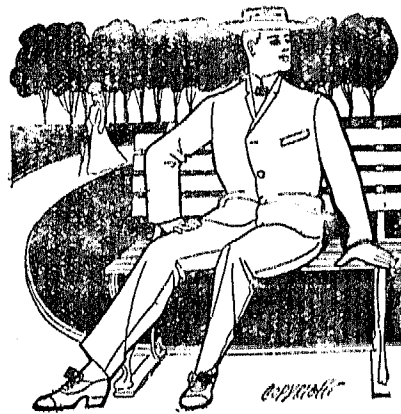
**NOTARY AT BANK.**

**YOU** have been wearing our Clothing for 10 years, and know they are O. K.

**WE** are still in the business. You will find us with both **STYLE** and **QUALITY**.

The only exclusive **CLOTHIER** in Doniphan County.

**JAKE KERSCH,**  
 Severance, Kansas.



**L. M. BENNETT, D. D. S.**

THE SUPERIOR DENTIST

One of the oldest and best in the County. Ancestors were Dentists in Philadelphia. I know I can please you. Office at residence. Prompt attention given.

SEVERANCE . . . . . KANSAS.

**The Severance News,**

A MODEL HOME NEWSPAPER

—AND A—

WELCOME WEEKLY VISITOR  
 TO DONIPHAN COUNTY HOMES, AND HOMES  
 OF "FORMERLYS" WHO CANNOT KEEP  
 HAPPY HOUSE WITHOUT IT.

**MRS. HATTIE E. PEELER, Editor and Proprietor.**

J. M. MORLEY, Cashier.

D. J. Ward,

R. W. Morley,

Assistant Cashiers.

**BANK OF SEVERANCE,**

SEVERANCE, KANSAS.

CAPITAL, \$15,000.  
 SURPLUS, 6,000.

Conducts a general Banking business in all its branches.

Domestic and foreign exchange bought and sold.

We give prompt attention to collections.

The best business men deposit their money in a bank.

Money deposited with us is beyond the reach of house-breakers.

We loan money on reasonable terms.

We accord liberal treatment to our depositors and patrons in general, and endeavor to show our appreciation of their patronage by an interested consideration of their needs.

If you are not dealing with us call and investigate our methods.



J. F. Ebeling.

H. A. Laverentz.

**EBELING & LAVERENTZ,**

PROPRIETORS OF

**Severance Roller Mills.**

**Our Brands:** HIGH PATENT, 1900,  
SNOW FLAKE, AND  
WHITE FROST Patent.

Always pay highest market price for Wheat, Corn, and  
Oats, and sell Flour at lowest price. Come and see us.

SEVERANCE . . . . . KANSAS.

**W. N. Vanbebber,**

—PROPRIETOR—

**The Great Western Livery Barn,  
SEVERANCE, KANSAS.**

The most faithful Liveryman in the State. He never  
sleeps with both eyes—always looking out  
for the welfare of his customers.

PROMPT, RAIN OR SHINE—CHEERFUL AS A LARK!

**T. E. HORNER, M. D.,  
PHYSICIAN and SURGEON,**

Office at Residence.

SEVERANCE . . . . . KANSAS.

MISS BELLE ZIMMERMAN,

**FASHIONABLE MILLINER**

Latest Styles in Ladies and Misses Headwear. A fine array  
of the most artistic designs. Visitors warmly welcomed.

SEVERANCE, . . . . . KANSAS.

**A HOUSE**

Whether you are a man or a horse, you need a building  
to live in. A man's house is called a DWELLING while a  
horse's house bears the humble name of BARN. Now, you  
know these things, but do you know that—

BENDENA **W. C. ALBERS,** KANSAS,  
\*\*\*\*\*

Can furnish you all kinds of BUILDING MATERIAL?  
Brick for foundation and chimney, Lumber for the main  
structure, Sash and Glass for the windows, and Shingles  
for the roof. . . . When you get the house you'll want to  
keep it warm. Easy enough—get COAL—there are three  
or four brands of the best kept on hand, at reasonable prices.

THINKING OF BUILDING? Then choose  
your carpenter, bring him with you and we will take a walk  
through the Lumber Yard. "Billy" will make you prices  
that will satisfy you. . . . .

**H. L. VANVERTH,**

BENDENA, . . . . . KANSAS.

—Dealer in—

**Shelf and Heavy Hardware,**

PUMPS, TANKS, WINDMILLS, BUGGIES, STOVES,  
TINWARE, FURNITURE, OUTLERY, ETC.

My whole store is filled with Goods that are Bargains.  
There are more in my ware room and still more coming.

Young man, MY BUGGIES ARE WIFE WINNERS!  
No lady can resist you if you go dashing up to her door in  
one of my STYLISH RIGS. They are fit for a Queen to  
ride in.

Agent for the famous RULLMAN WASHING  
MACHINE—a machine that washes clean without break-  
ing your back.

You want to make a dollar go as far as possible, don't  
you? Well, let me show you how. Come in and see me.  
I'm busy, but never too busy for business.



**F. O. LEONHARD,**  
 Proprietor of the  
**POPULAR DRUG STORE**  
**SEVERANCE, KANSAS.**  
 \*\*\*\*\*  
 A FULL AND COMPLETE  
 LINE OF  
**PURE DRUGS**  
 ALWAYS KEPT IN STOCK.

Here he is. Prescriptions carefully compounded.

DO YOU KNOW THAT—

**F. W. SCHULTZ, OF WATHENA, KANSAS,**  
 Handles all kinds of Tinware, Enameled ware, Pocket Cutlery, Shears, Razors, Step ladders — all kinds and prices, Stoves and Pipe. Just give him a call and let him quote you prices on the **ROUND OAK FURNACE** or on the **COLT ACETYLENE** light machine. He will do your tin and galvanized iron work, gutters, roofing and spouting for you at reasonable prices.

**UP-TO-DATE**  
 AND  
**WIDE-A-WAKE**

THAT'S  
**TONY**  
**SCHROEDER,**

It's a pleasure to visit this cozy little store, and a saving of money to trade there. You'll find everything new, neat there—and cheap in price—that's where the pleasure comes in. Here's another thing: **SCHROEDER** takes in your produce furnished by the cow and the hen—that's **SCHROEDER, of BENDENA!**

**R. E. ALLEN, M. D.**

• Physician • and • Surgeon, •

D | O | N | I | P | H | A | N | K | A | N | S | A | S.

**DO IT NOW**



Write us a card saying you would like to have the **EMPIRE CREAM SEPARATOR** brought to your house for free trial. It makes the most dollars for you—Costs you nothing to try it—Sold for cash or on easy payments. **E. A. BENSON, Agt., Leona, Ks.**



Having finished his work, the Printer shoulders his type and goes his appointed way. If he has done you good, say a word of praise for him, and a prayer that his path may be comparatively clear of tripping stones and free from lacerating thorns. He has done his humble best, and has had his labors sweetened with the hope of producing a work worthy of the patronage he respectfully solicits. Good friends will readily understand that even a printer is subject to the influence of error—that he being mortal, made of common clay, can blunder and be mistaken—and if error be discovered in these pages, wonder need not arise, for the Creator has made no perfect man, and man has made no perfect book.